

MOBILE BOTANICAL GARDENS

Prior to European settlement in the 1700’s, the land on which Mobile Botanical Gardens stands today was part of a vast longleaf pine forest. Most of this land was logged for longleaf pine in the early 1900’s, so the forest that you can visit today in our 35 acre conservation area (to the east of the parking lot) is actually considered second generation growth. The lake you drove in by once served as Mobile’s early water source until the 1950’s, which is why the acreage surrounding the lake was restricted from development. In all, the Mobile Botanical Gardens consists of over 100 acres of special gardens and Longleaf conservation area.

**1 The Plauché Bog Garden**  
Named in honor of Terry Plauché, a local landscape architect, this unique garden is a man-made bog with an engineered system to replicate the freshwater wetland necessary to support carnivorous plants such as pitcher plants and sundews.

**2 The ReBloom Garden**  
The ReBloom Mobile project sought to rekindle the spirit of community gardening in the City of Mobile and to provide suggestions for plants to achieve a 12-month color display. Look for our favorite Gulf Coast garden plants surrounding the lawn.

**3 Millie McConnell Rhododendron Garden**  
The Millie McConnell Rhododendron Garden began as a native azalea garden, planted by Tom Dodd, John Allen Smith, and Dr. John Giordano. The garden was redesigned in 2006 to showcase azalea hybrids either created in Mobile, or especially well suited to our climate. These groups include the Aromi, Dodd, and Sawada hybrids. This Garden also boasts the largest public collection of Satsuki azaleas in the U.S., as well as an extensive collection of historic Southern Indica azaleas.

**4 Aromi Hybrid Azalea Garden**  
This garden houses the most significant collection of Aromi Hybrid Azaleas in the country. Dr. Eugene Aromi created these azaleas which combine the hardiness and fragrance of native deciduous azaleas with the large flower trusses and color of the cold weather suited Exbury hybrids.

**5 Founders Fragrance and Texture**  
This garden is often called the Founders Garden because it was designed, planted and maintained by the founders of the Mobile Botanical Gardens in the early 1970’s. It was designed as a trail for those who are visually impaired or with mobility issues. The koi pond is a favorite feature of this woodland garden. Our koi range in age from baby to over 20 years!

**6 John Allen Smith Japanese Maple Garden**  
The specimen trees in this garden were relocated here from Mr. Smith’s private collection. This serene garden incorporates fundamental concepts of design: rocks, water, plants, and ornaments. A Casey Downing sculpture rests in the center of the collection.

**7 The Sybil Burnett Herb Garden**  
The raised beds introduce you to herbs classified as culinary, spiritual, medicinal, native, historical, household, and fragrant. Around the perimeter of the Herb Garden you will find gingers, montbretia, Lady Banks climbing roses, and calamondin tree.

**8 Piff Plaza and Fountain**  
The courtyard features clumping bamboo, annuals and perennials such as farfugium. The Piff Fountain, located in the center of the plaza, was donated in memory of Mrs. Elsa Piff – a long-time supporter of the Gardens. Her beautiful Plumeria are on display here every spring and summer.

**9 Pollinator Garden**  
This garden serves as a major attraction for many pollinators as they migrate through our area. Enjoy the busy bug world as you visit among our regional pollinator plants. In 2014 the Bruce Larsen butterfly sculpture, *Transformation*, was given on a long term loan to the Gardens from the Mobile Museum of Art.

**10 The Alfred Piff Memorial Solar / Planetary Walk**  
This .8 mile trail serves as a scale model of our solar system neighborhood! Follow the trail and discover each planet - and by scanning the QR codes provided, learn more.

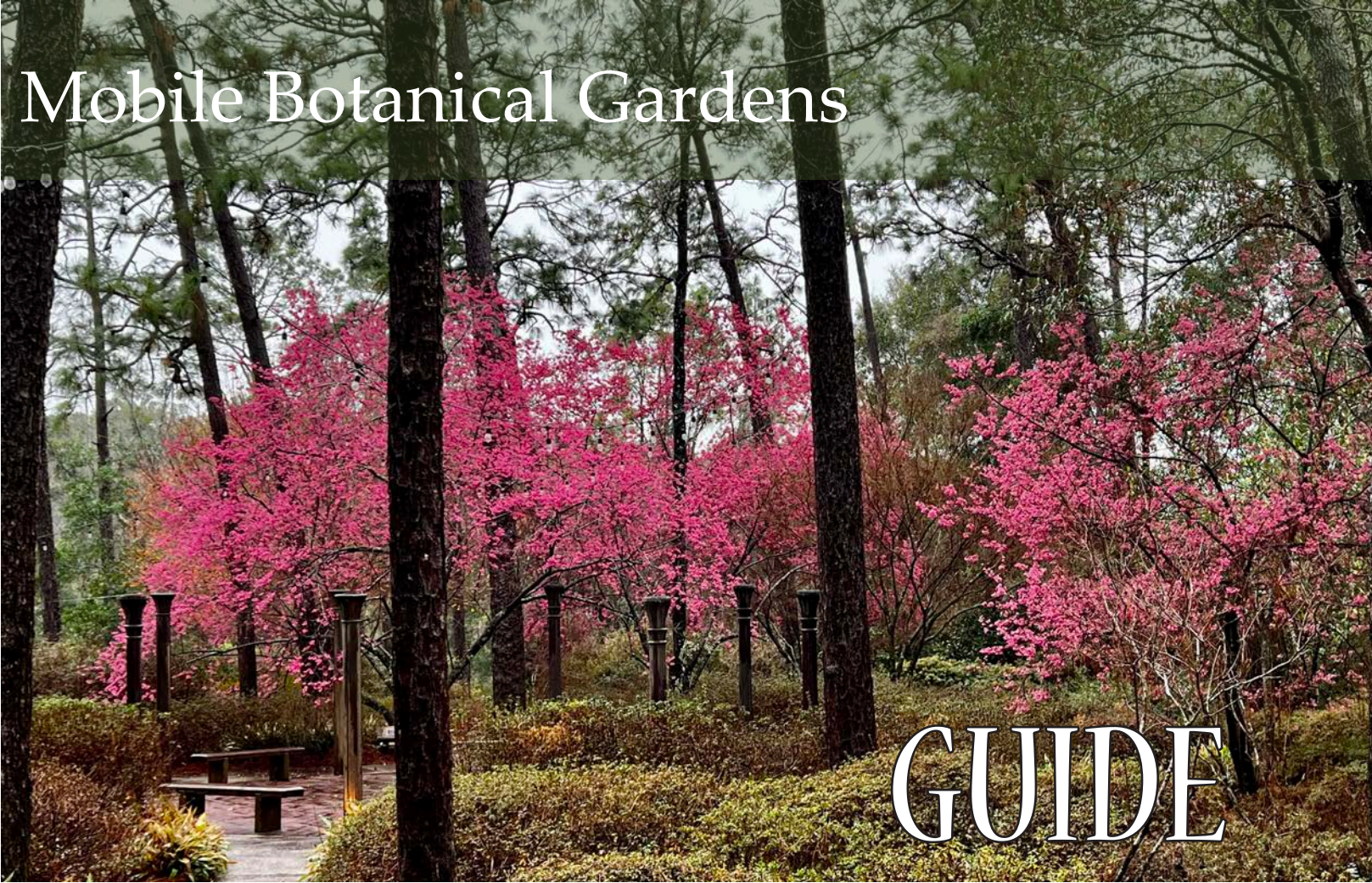
**11 Cleyera Cathedral**  
The natural cathedral is a serene gathering area set amongst decades old cleyera trees that were part of an old nursery.

**12 Magnolia Hill**  
This area includes propagation houses and grow fields, a small conservatory, studio building, urban chicken management area, and honey bee hives. Magnolai Hill is also where we conduct our educational programming for children - like NatureBlast, Veggie Kids, and more.

**13 The Tea Maze**  
The shape of tea maze is inspired by a Chinese medallion from the Ming Dynasty. These plants were grown from cuttings of the plants from the old Lipton Tea plantation in Baldwin County. Tea is made from the leaves of the camellia sinensis.

**14 Kosaku Sawada Winter Garden**  
This garden is named in honor of Kosaku Sawada who immigrated from Japan in the early 1900’s and settled in Mobile. Sawada hybridized many camellias which are now famous around the world. Named a *Garden of Excellence* in 2014, many reclaimed architectural materials from old Mobile were used throughout the 7-acre collection garden.

**15 The Katherine Shropshire Memorial Nature Trail**  
Dedicated in 1981, the original deep woods trail is a ¼ mile walk on moderate paths. In 2020 the trails were expanded into the 40 acres of natural woodland that extend back to the west along 12-Mile Creek.



Welcome to the Gardens!

Tuesday - Friday: 9am - 4pm  
Saturdays: 10am - 3pm  
last admission 1 hr prior to close

**Admission**  
Adults (Ages 13+): \$8  
Children (Ages 3-12): \$3  
Student/Military/Senior: \$6 (with ID)  
Museums for All: \$3 (with EBT card and ID)



Mobile Botanical Gardens is a 501(c)3 non-profit with public/private funding. Help us continue our mission of education and protecting the plant collections by paying admission, becoming a member, or donating. Thank you!

Educational & Programming Support Provided by:  
The Wayne Denson McRae Endowment



Garden Etiquette & Rules

- Help us to preserve the beauty of the Gardens for everyone. Please *do not* pick flowers, walk through beds, climb the trees or on boulders.
- **MBG is a smoke free campus**
- No alcohol is allowed on the grounds
- Shirts and shoes required at all times. Appropriate clothing required.
- Please do not climb or play on/in the fountains and sculptures
- No bikes please - They may be left in front of the office or at the gate gazebo.
- Dogs must be on a leash at all times. Clean up after pets.

Join the MBG Family!

Become a member of the Mobile Botanical Gardens and enjoy free admission, special member discounts, and events, plus admission to over 300 botanical gardens nation wide!

251•342•0555  
www.mobilebotanicalgardens.org  
5151 Museum Drive - Mobile, AL 36608





# MOBILE Botanical Gardens



1 Plauché Bog Garden



2 ReBloom Garden



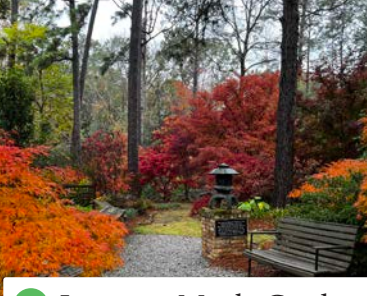
3 McConnell Rhododendron & Azalea Garden



4 Aromi Azalea Garden



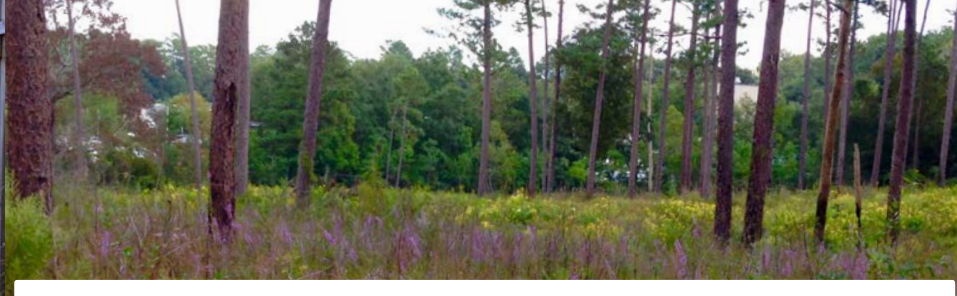
5 Fragrance & Texture



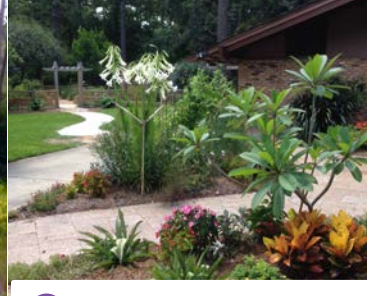
6 Japanese Maple Garden



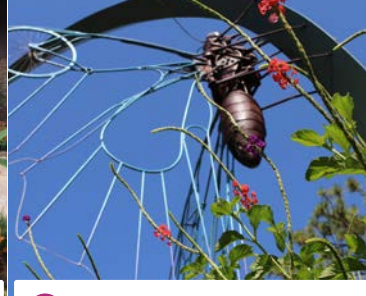
7 Burnette Herb Garden



Longleaf Conservation Forest-35 acres maintained for the public



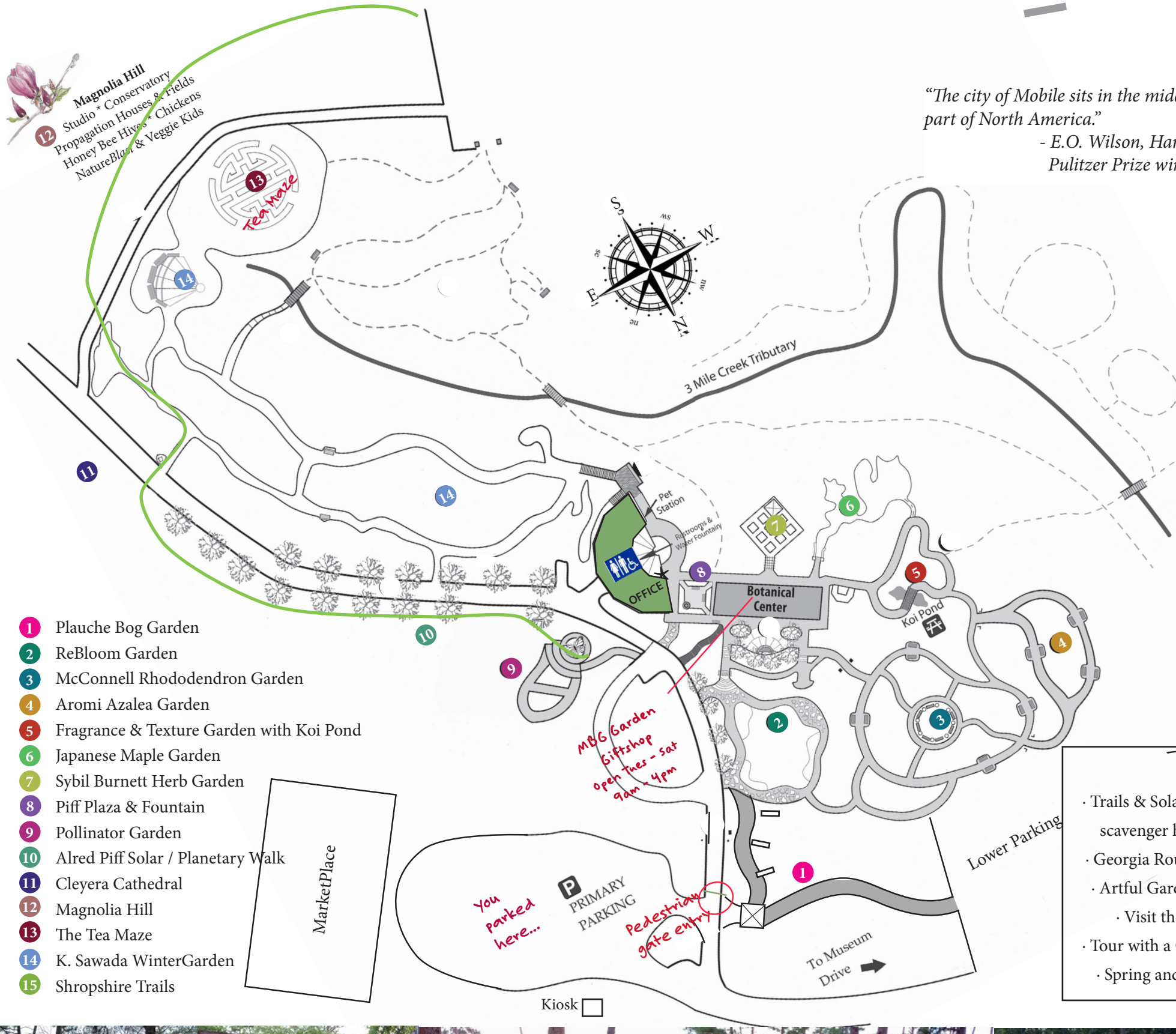
8 Piff Plaza & Fountain



9 Pollinator Garden



10 Piff Solar Walk



"The city of Mobile sits in the middle of the biologically richest part of North America."  
- E.O. Wilson, Harvard University biologist and Pulitzer Prize winning author

- LEGEND:
- Paved path
  - Unpaved path
  - - - Seasonal Trails
  - ~ Stream



14 K. Sawada WinterGarden



13 The Tea Maze



12 Magnolia Hill



11 Cleyera Cathedral

The Shropshire Trails are best during the Fall and Winter months.

\$5

## Things to Do

- Trails & Solar/Planetary Walk - check out our scavenger hunts available in the Gift Shop
- Georgia Roussos catered Lunches on Fridays
- Artful Garden Gift Shop open Tues-Sat 9-4
  - Visit the Chickens and feed the Koi!
- Tour with a Garden Cat - Loki, Leo, or Louise
- Spring and Fall Plants Sales (Mar. & Oct.)