





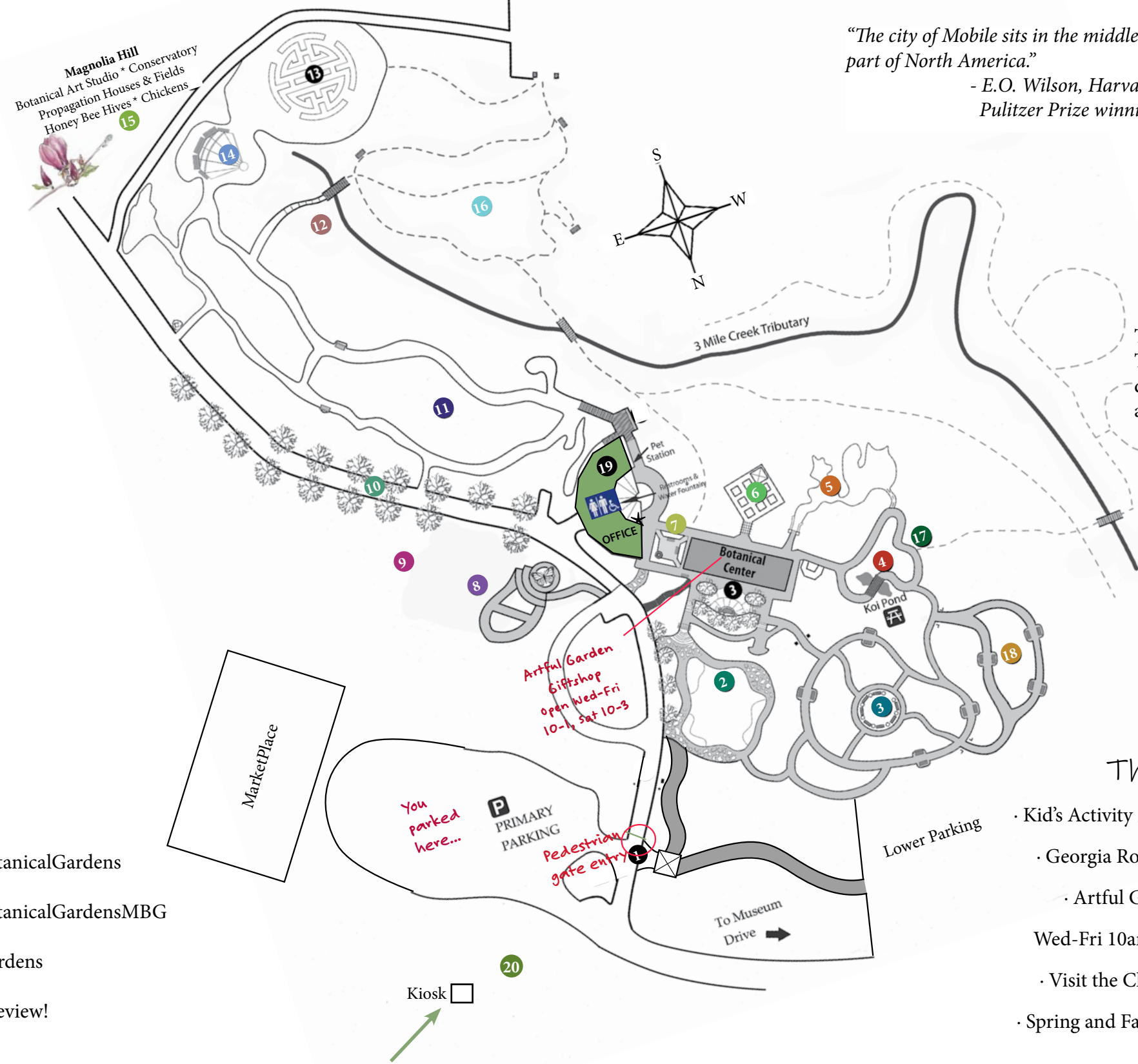
# MOBILE Botanical Gardens

Come Here to Grow

**LEGEND:**

-  Paved path
-  Unpaved path
-  Seasonal Trails
-  Stream

*"The city of Mobile sits in the middle of the biologically richest part of North America."*  
 - E.O. Wilson, Harvard University biologist and Pulitzer Prize winning author




The Shropshire Trails are best during the Fall and Winter months.



### Things to Do

- Kid's Activity Backpack w/ scavenger hunt
- Georgia Roussos Lunches Wed & Fri
- Artful Garden Gift Shop open Wed-Fri 10am -1pm & Sat 10am -3pm
- Visit the Chickens and feed the Koi!
- Spring and Fall Plants Sales (Mar. & Oct.)

 @MobileBotanicalGardens  
 @MobileBotanicalGardensMBG  
 @MobileGardens  
 Leave us a review!